

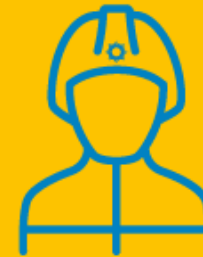


West Sussex
Fire and Rescue
www.westsussex.gov.uk/fire

West Sussex Fire and Rescue Service
Community Risk Management Plan (CRMP)
Consultation

FRS Scrutiny Committee

13th January 2022





West Sussex
Fire and Rescue
www.westsussex.gov.uk/fire

What is a Community Risk Management Plan?

- Community risk management planning is a requirement under the National Framework (2018), produced by the Home Office and supported by the National Fire Chiefs Council (NFCC).
- Fire and rescue services must produce, review and update a CRMP that identifies and considers all foreseeable and existing strategic, operational and community risks relevant to the service, taking into account national, regional, and local influence as well as local and national policies.
- It helps us to work out where we need our staff and resources, so that we can respond to high-risk incidents and plan how to deliver our vital prevention and protection work.



**West Sussex
Fire and Rescue**

www.westsussex.gov.uk/fire

WSFRS Strategic Priorities

- Our current 4-year Integrated Risk Management Plan (IRMP) for the Fire & Rescue Service comes to an end in 2022.
- We are working to develop our new 4-year plan and are currently out to consultation with the public, staff and stakeholders on 6 key proposals.

WSFRS Strategic Priorities 2022-2026 (Our Council Plan Priorities)

- Preventing fires and emergencies from happening – [Keeping people safe from vulnerable situations](#)
- Protecting people, firefighters and property by making buildings as safe from fire as they can be - [Keeping people safe from vulnerable situations & safe and prosperous economy](#)
- Responding to fires and emergencies quickly and effectively - [Keeping people safe from vulnerable situations and helping people and communities to fulfil their potential.](#)
- Have a safe and valued workforce - [Helping people and communities to fulfil their potential.](#)
- Making best use of resources – [Making the best use of resources](#)



West Sussex
Fire and Rescue
www.westsussex.gov.uk/fire

Our 2022-2026 proposals



**West Sussex
Fire and Rescue**
www.westsussex.gov.uk/fire

Proposal 1: Enhance our retained operating model

Percentage of fire engine availability

Retained at one fire station



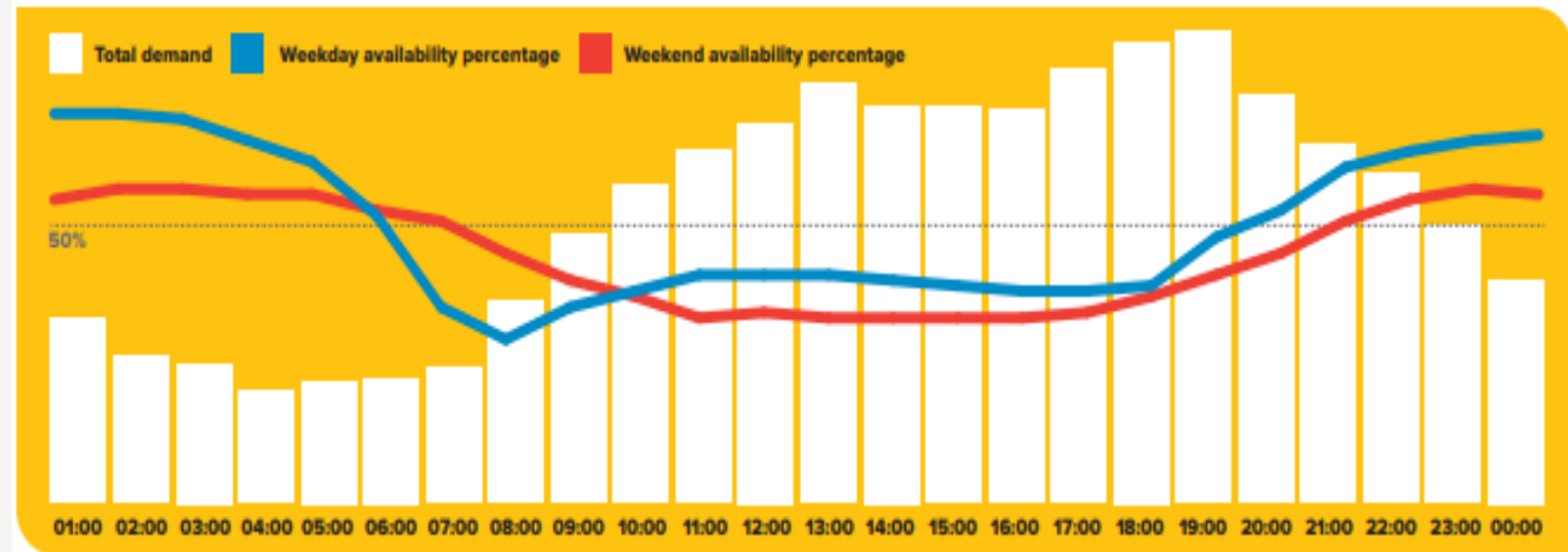
Retained at a wholetime fire station



Retained at a day crewed station



Retained and day-crewed pump availability by hour: 2018/19 and 2019/20

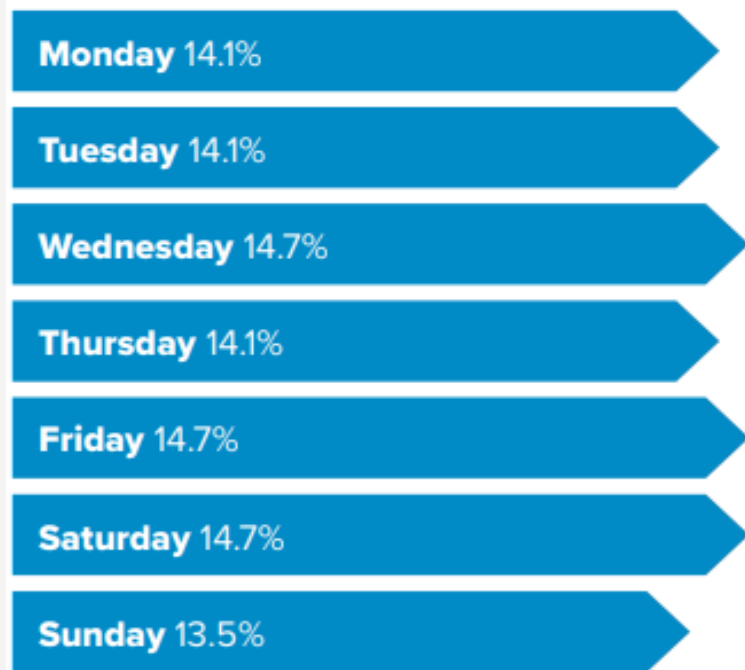




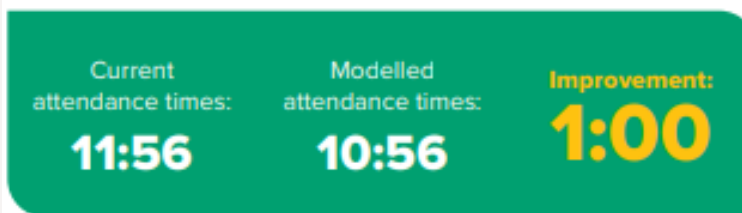
West Sussex
Fire and Rescue
www.westsussex.gov.uk/fire

Proposal 2: Weekend protection, prevention and response improvements

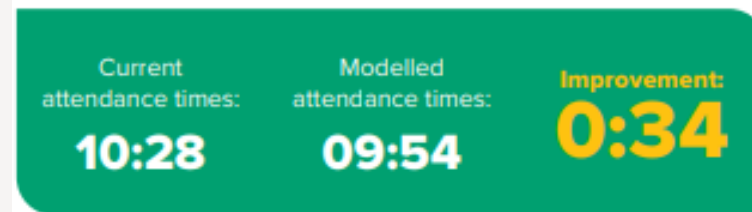
Average weekday incident demand



Mid Sussex District



Adur District

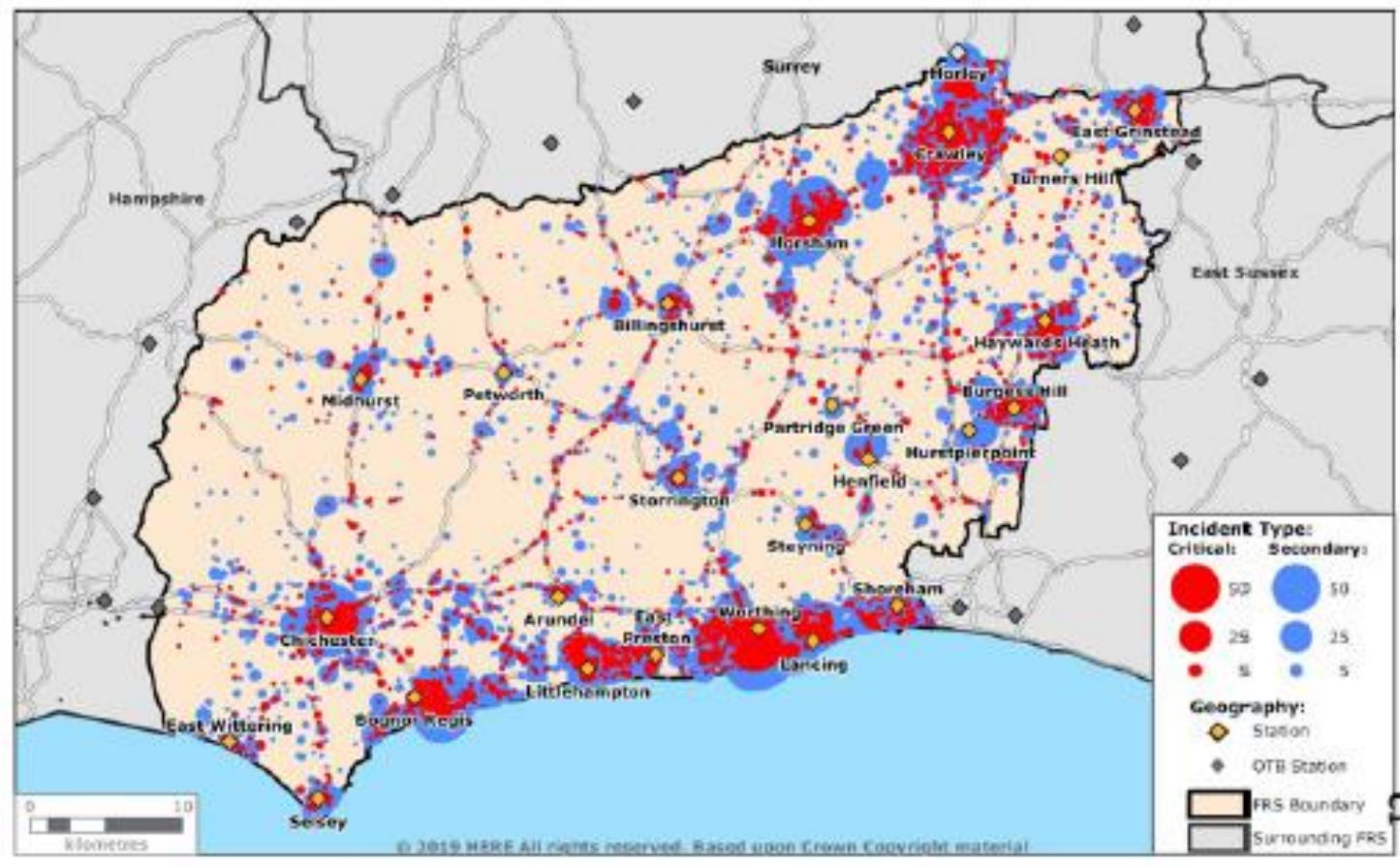


This proposal would increase the number of immediate response weekend daytime fire engines by 50%, from 8 to 12



West Sussex
Fire and Rescue
www.westsussex.gov.uk/fire

Proposal 3: Improving protection, prevention and response performance in rural areas



Rural community:

42%

of the population

Increased focus on rural prevention, protection and response activity

7am-7pm



West Sussex
Fire and Rescue
www.westsussex.gov.uk/fire

Proposal 1-3 Summary

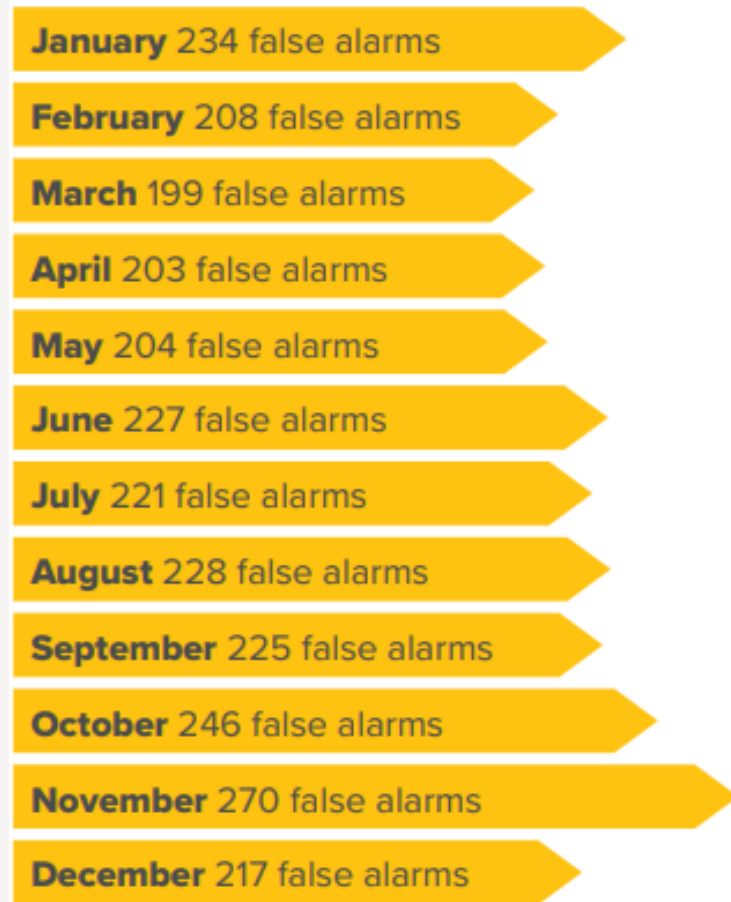
- Consistent and resilient fire cover aligned to risk and demand, 7 days per week
- Improved availability of retained crewed appliances
- Improved emergency response performance in urban and rural areas – 13 second service wide improvements
- Greater capacity to deliver essential Prevention and Protection activity to reduce community risk.



West Sussex
Fire and Rescue
www.westsussex.gov.uk/fire

Proposal 4: Unwanted false alarms - changes to our response

False alarms attended by month





West Sussex
Fire and Rescue
www.westsussex.gov.uk/fire

Proposal 5: Review of Emergency Response Standards



First fire engine response standards

- **Very high risk: less than 8 minutes** **70% target**
- **High risk: less than 10 minutes** **92% target**
- **Medium risk: less than 12 minutes** **89% target**
- **Low risk: less than 14 minutes** **92% target**

Benchmark: 89% target

Second fire engine response standards

- **Very high risk: less than 11 minutes** **71% target**
- **High risk: less than 13 minutes** **91% target**
- **Medium risk: less than 15 minutes** **83% target**
- **Low risk: less than 17 minutes** **84% target**

Benchmark: 83% target



**West Sussex
Fire and Rescue**

www.westsussex.gov.uk/fire

Proposal 6: Enhanced specialist capability and assets

Special appliances

The special appliance vehicles in WSFRS are:

- Four wheel drive (11 vehicles)
- Four wheel drive with Environment Agency equipment
- Water carrier (two vehicles)
- Incident Command Unit
- Command Support Unit
- Heavy rescue tender (three vehicles)
- Breathing Apparatus Support Unit (two vehicles)
- Boat (two vehicles)
- Unimog
- WSFRS drone
- High volume pump
- Aerial ladder platform (two vehicles)





West Sussex
Fire and Rescue
www.westsussex.gov.uk/fire

Any questions?