



West Sussex
Highways

Highways Contract Delivery Update

Guy Bell

Head of Highways Planned Delivery

14 September 2020

Business as usual



Contract model



West Sussex
Highways

Lot	Title	Contractor	Start Date	End Date
Lot 1	Provision of Core Highways Maintenance Service	Balfour Beatty Living Places	01-Apr-20	31-Mar-25
Lot 2	Provision of Highways Drainage Maintenance Service	Drainline Ltd	01-Apr-20	31-Mar-25
Lot 3	Provision of Hedge Maintenance & Grass Cutting Services	Grasstex Ltd	01-Apr-20	31-Mar-25
Lot 4	Carriageway & Footway Resurfacing	Aggregate Industries UK Ltd Associated Asphalt Contracting Ltd Balfour Beatty Living Places FM Conway Ltd Tarmac Trading Limited	01-Apr-20	31-Mar-24
Lot 5	Carriageway Surface Dressing and Carriageway & Footway Treatments	Colas Limited Eurovia Infrastructure Limited JPCS Limited Kier Highways Limited Road Maintenance Services Limited	01-Apr-20	31-Mar-24
Lot 6	Infrastructure Improvements - Planned Works	Balfour Beatty Living Places Dyer & Butler Ltd Jackson Civil Engineering Group Ltd Landbuild Ltd Tarmac Trading Limited	01-Apr-20	31-Mar-24

250+ schemes tender for and awarded to framework contractors

Value over **£19m**

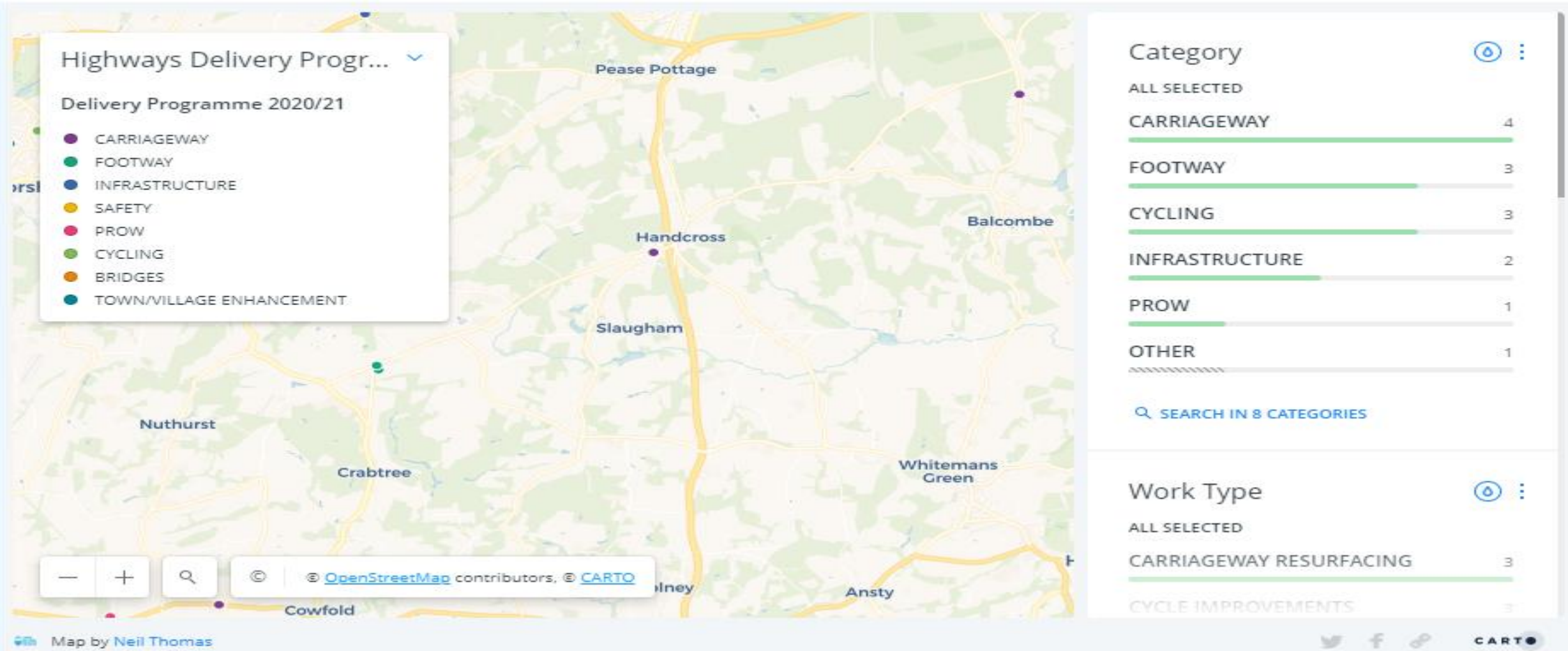
Planned delivery by **March 2021**

Delivery Programme

- Highway and Transport Delivery Programme can be found : [Here](#)
- To view via map: [Here](#)
- All roadworks information : [Here](#)

Delivery Programme

View a map of the locations of planned Highways schemes in West Sussex.



Highways Delivery Progr...

Delivery Programme 2020/21

- CARRIAGEWAY
- FOOTWAY
- INFRASTRUCTURE
- SAFETY
- PROW
- CYCLING
- BRIDGES
- TOWN/VILLAGE ENHANCEMENT

Category

ALL SELECTED

CARRIAGEWAY	4
FOOTWAY	3
CYCLING	3
INFRASTRUCTURE	2
PROW	1
OTHER	1

SEARCH IN 8 CATEGORIES

Work Type

ALL SELECTED

CARRIAGEWAY RESURFACING	3
CYCLE IMPROVEMENTS	3

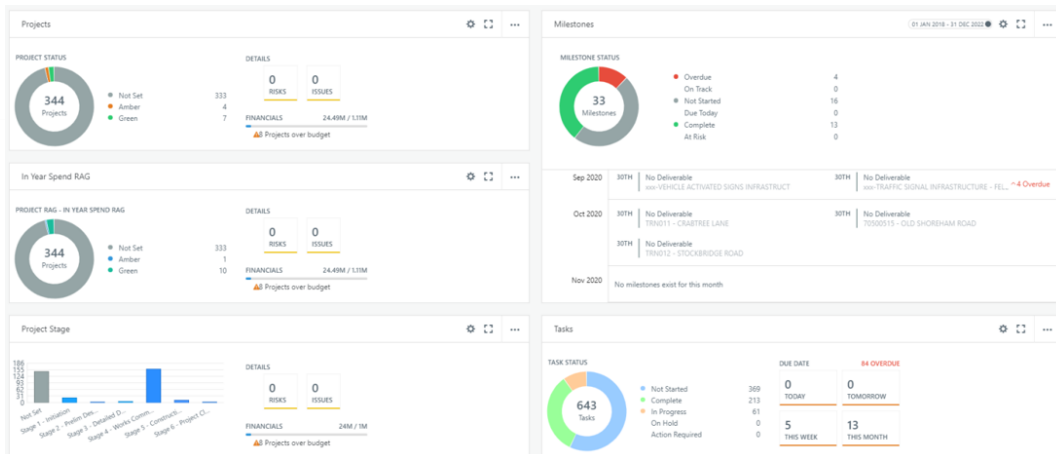
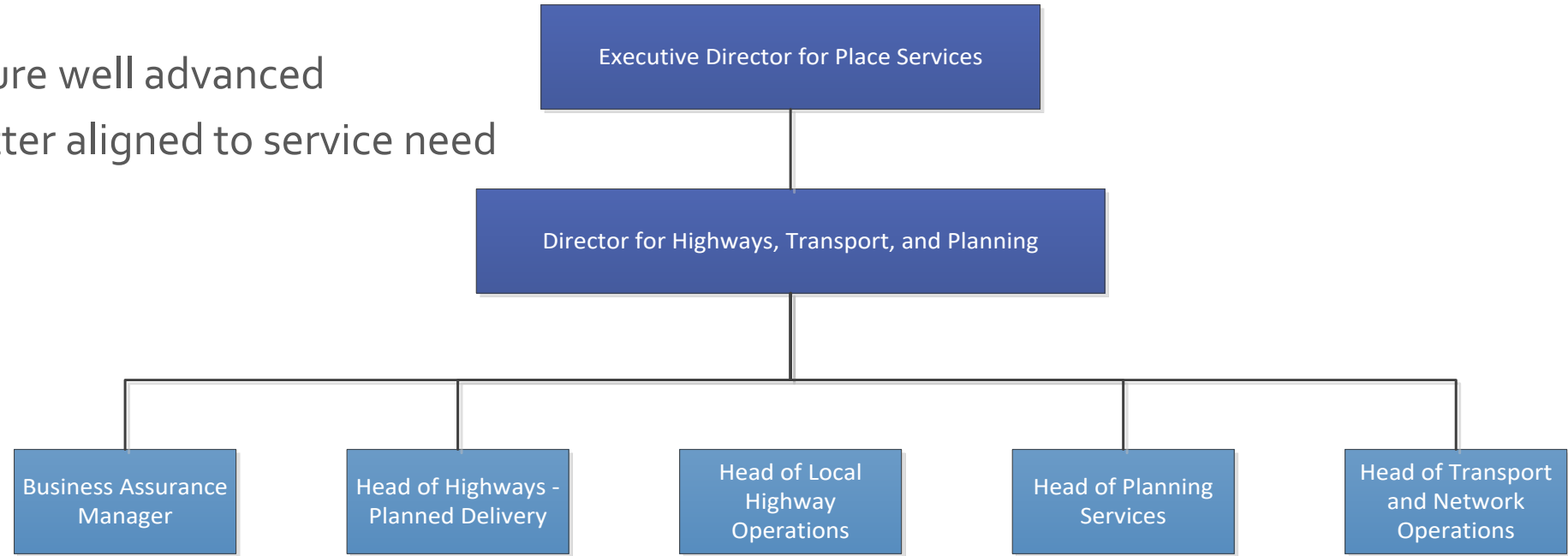
Map by Neil Thomas

Next procurement phase

- September 2020 procurement for **21-22 Delivery Programme**
- Likely to be **300 +** schemes

Service Preparedness

- Service Review, restructure well advanced
- Skills and experience better aligned to service need
- More to do
- Huge effort by all staff



Managing the Network

- Asset Management Approach
- Highway Infrastructure Policy and Strategy : [Here](#)

The aim is to invest money at the optimum time in our highways assets to get the best value and asset performance

Investment – or steady decline



Size of the task

- Carriageways – over **4,000** km
- **3855** km of Footways
- **130,000** drainage gullies
- Structures – **781**
- Street Lighting – over **65,000**

Road Surfaces – Where is Investment Needed?

Approximately **2511 miles** of road network in West Sussex (about 4042 km)

Principal A-Roads

313 miles of A-Roads (12.5%)

Classified B & C Roads

209 miles of B-Roads (8.3%)
622 miles of C-Roads (24.8%)

Unclassified U-Roads

1367 miles of U-Roads (54.5%)



95 miles (3.8%)

81 miles B-Roads (3.2%)
197 miles C-Roads (7.8%)

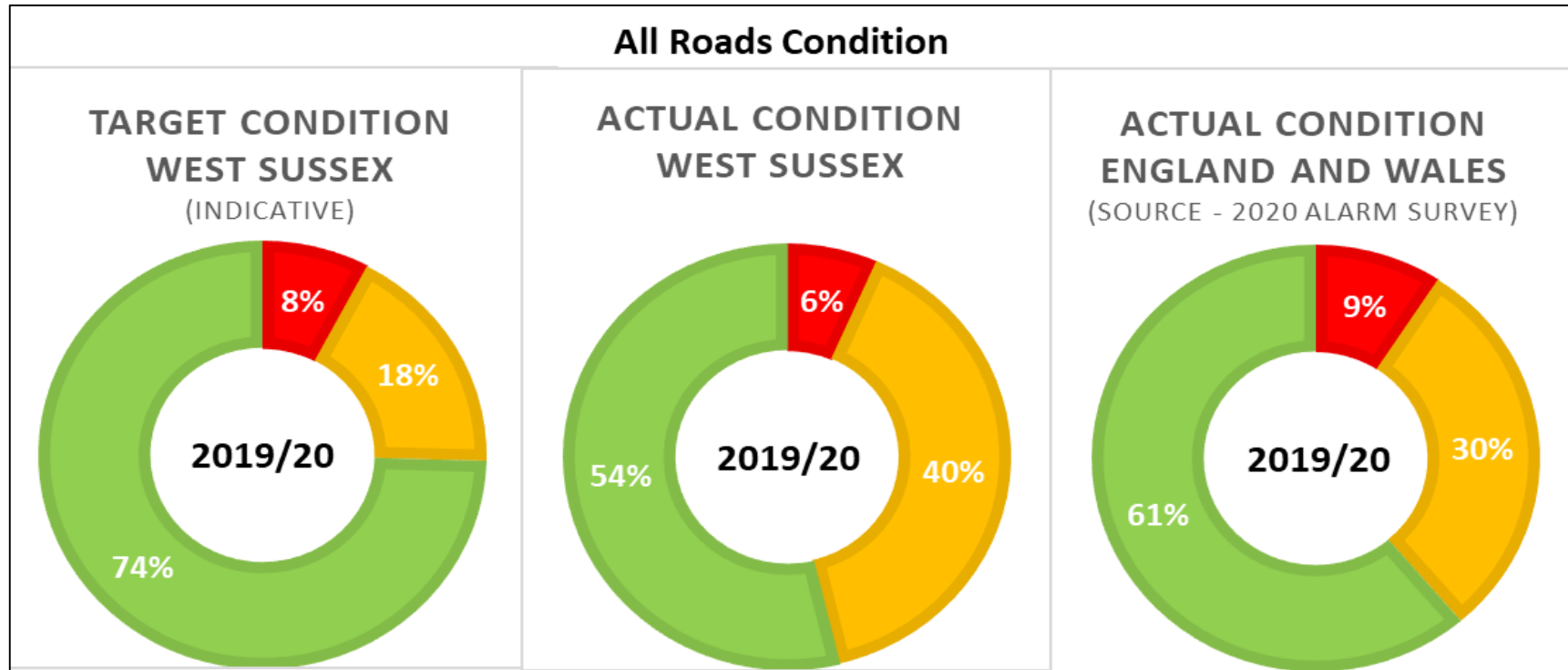
983 miles U-Roads (39.1%)



218 miles (8.7%)

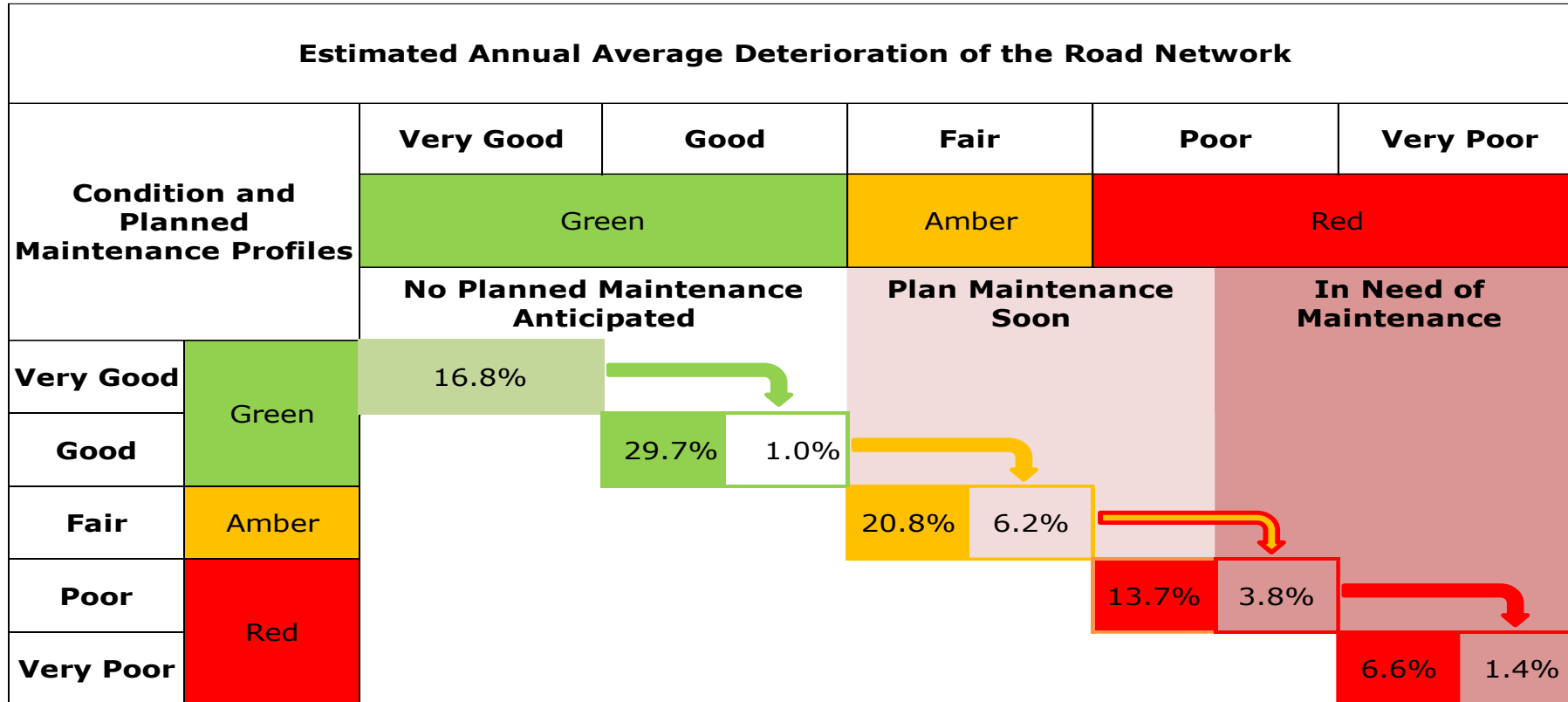
128 miles B-Roads (5.1%)
425 miles C-Roads (16.9%)

384 miles U-Roads (15.3%)



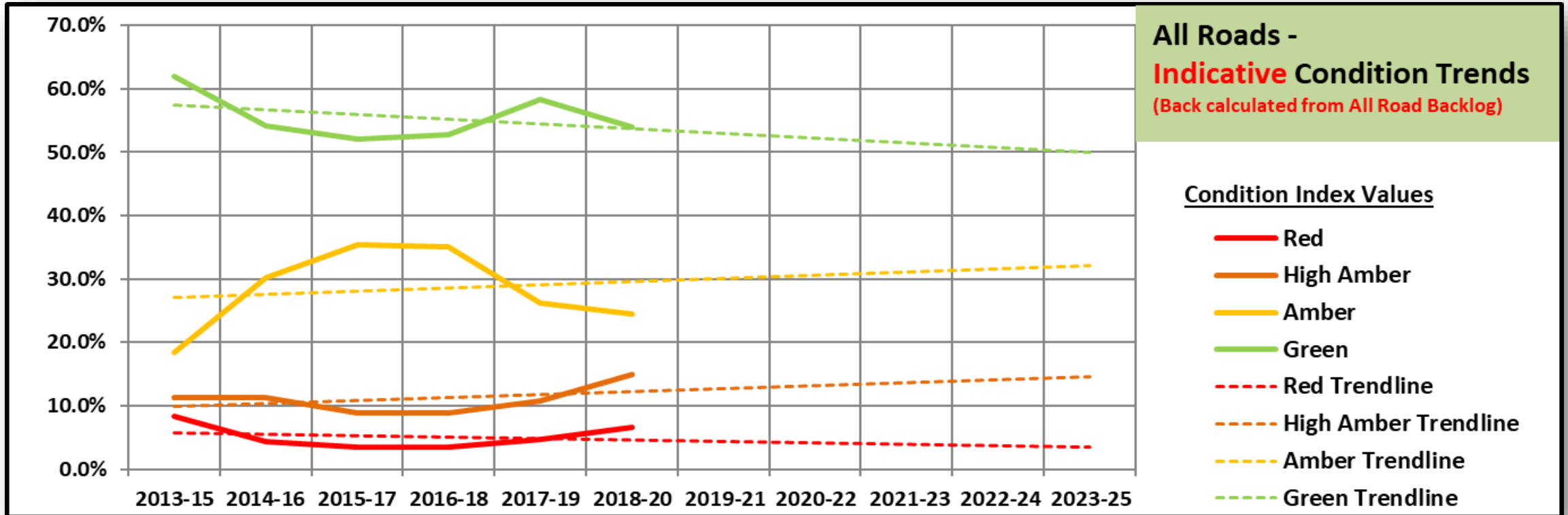
- **GREEN** defines carriageway in a good state of repair
- **AMBER** is where some deterioration is apparent, which should be investigated to determine the optimum time for planned maintenance
- **RED** for carriageway in poor overall condition.

Road Maintenance Need



Condition Cascade	Estimated Road Length
Amber (Fair) to Red (Poor)	154 km (96 miles)
Red (Poor) to Red (Very Poor)	57 km (35 miles)

Road Condition



- **GREEN** defines carriageway in a good state of repair
- **AMBER** is where some deterioration is apparent, which should be investigated to determine the optimum time for planned maintenance
- **HIGH AMBER** is deterioration beyond the point where preventative maintenance treatments are likely to be effective
- **RED** for carriageway in poor overall condition

Road Maintenance Need and Network Condition

